



PARAMOUNT REAL ESTATE  
& PROPERTY MANAGEMENT



**SOLD**

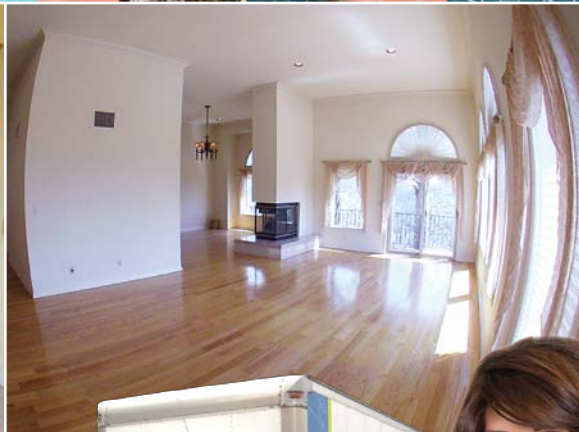
*Inviting 1987 traditional*

2147 Rimcrest Drive, Glendale, CA 91207



This inviting 1987's Traditional in Premier Glendale welcomes you w/exceptional attention to detail, designer finishes & fabulous amenities. This spectacular home leads you into this Light, Bright and spacious entry offering an open floor plan with a magnificent living/dining room with city views. Features include:

- |                        |                   |
|------------------------|-------------------|
| 5 Bedroom              | City Views        |
| 4 Bathroom             | Redone Back Yard  |
| Built in 1987          | Spa               |
| New Roof               | BBQ Bar           |
| Oak Hardwood Floors    | Lush Landscaping  |
| Double Pane Windows    | Double Fireplace  |
| Custom Recess Lighting | Central HVAC      |
| Renovated Kitchen      | High Ceilings     |
| Indoor Laundry Room    | Large Family Room |
| Maple Wood Cabinetry   | Large Living Room |
| Granite Counter tops   | Large Dining Room |



**PARAMOUNT REAL ESTATE**  
& PROPERTY MANAGEMENT

This Brochure is sponsored by

**Glendale Escrow**  
613 E Glenoaks Boulevard  
Glendale, CA 91207  
818-550-6200



Moving truck available



3439 Ocean View Blvd.  
Glendale, CA 91208

O (818) 542-3065  
C (818) 355-4906  
F (818) 542-3673

Karine Aslanian, Broker

**prepm.com**

Broker #01862416 DRE# 01331967

Each office is independently owned and operated. Featured properties may not be listed by the office/agent presenting this brochure. Information has not been verified, is not guaranteed, and is subject to change. If your property is currently listed with a real estate broker please disregard this offer.